

GTM SPORTSWEAR

CREATE A NEW
BAND LOOK
— THAT STEALS —
THE SHOW

NEW
Alliance
Warm-up
PG 8



WE KNOW WHAT IT TAKES TO BE A TEAM™

BAND
SPRING 2015

1.877.245.4757 | service@gtmsportswear.com | gtmband.com

FREE U.S. SHIPPING ON ORDERS OVER \$200



WE KNOW WHAT IT TAKES TO BE A TEAM™

For more than 25 years GTM has been committed to helping directors create their band's unique style with custom and stock apparel. We understand the importance of uniting as one, which is why we passionately provide top-quality styles decorated exclusively for your team through our unparalleled selection of art and embellishment processes. Our sales representatives will give you a personalized ordering experience and a seamless delivery so your team can take on the season with confidence.

CONTENTS

WARM-UPS	PG 4-20
NEW ALLIANCE WARM-UP	PG 8
COLOR GUARD	PG 21-33
NEW BALLISTIC TOP	PG 24
NEW CHARISMA WARM-UP	PG 26
NEW ELEVATE WARM-UP	PG 27
FLEECE	PG 34-35
NEW 1/4 ZIP FLEECE PULLOVER	PG 35
NEW ELASTIC BOTTOM FLEECE PANT	PG 35
NEW OPEN BOTTOM FLEECE PANT	PG 35
TEES AND SHORTS	PG 36-38
PARENT & FAN GEAR	PG 39
POLOS	PG 40-42
NEW RAGLAN POLO	PG 41
ACCESSORIES	PG 43-45
NEW HYBRID PACK	PG 44
ART DESIGNS	PG 46-47



Being part of a team has a tremendous impact on the lives of young people. It helps build their self-esteem, their confidence and helps them relate to other people. At GTM, we admire band instructors for all the hard work they do and the way they help performers develop their talent. Designing and ordering team apparel can be stressful, and that is where GTM can help. We are determined to make outfitting the team a fun and easy task with a personalized ordering experience so coaches can focus on what they do best.

Dave Dreiling
Dave Dreiling
Owner, GTM Sportswear

ULTRAFUSE™

The GTM UltraFuse line features superior performance material, bold colors and endless design possibilities that allow you to create a one-of-a-kind look. Colors and designs are heat-fused directly into the fabric to allow for incomparable durability and resiliency wash after wash.

FIERCE WARM-UP



THE POSSIBILITIES ARE ENDLESS WITH ULTRAFUSE

After choosing your design, customize it with over 33 color options and your team name or logo. See how the Fierce Jacket transforms as colors and art designs change.



3 EASY STEPS TO CREATE YOUR CUSTOM ULTRAFUSE™ LOOK:

STEP 1: CHOOSE YOUR PRODUCT
GTM has a variety of options for you to choose from!

STEP 2: PICK A DESIGN

STEP 3: PERSONALIZE IT
Add your team colors, name and logo.

READY TO ORDER?
Contact a sales rep at 1.877.245.4757 or email service@igtm.com

UF ULTRAFUSE WARM-UPS

ADULT JACKET \$85: U701TU; SIZE: XS-4XL

ADULT PANT \$50: U701BU; SIZE: XS-4XL

LADIES' JACKET \$85: U702TL; SIZE: XS-2XL

LADIES' PANT \$50: U702BL; SIZE: XS-2XL

Upcharges: 2XL=\$2, 3XL=\$4, 4XL=\$8

- Brushed Polyester/Spandex
- Side Panel (Ladies' And Girls' Only)

- Zippered Pockets (Jacket)
- Ankle Zip (Adult And Youth Only)

- Headphone Port In Right Pocket
- Imported

Minimum quantity 6 on initial order. Order ships within 5-7 weeks after art and credit approval. Call your sales rep for specific delivery date.



Electric Pink, Blaze Yellow, Blaze Red, Teal, Lime, White, Black, Graphite, Silver, Brown, Vegas Gold, Athletic Gold, Orange, Red, Hot Pink, Purple, Navy, Royal, Columbia Blue, Turquoise, Forest, Texas Orange, Maroon, Cardinal, Kelly, Electric Blue, Army Green, Aqua Splash, Atomic Green, Fuchsia, Lavender Mist, Citrus, Hot Coral

WHAT IS ULTRAFUSE?

A dye sublimation technology in which colors, designs and logos are heat-infused directly into the fabric.

CHAOS WARM-UP

ADULT / LADIES / YOUTH / GIRLS



ODYSSEY WARM-UP

ADULT / LADIES / YOUTH / GIRLS



FIERCE WARM-UP

ADULT / YOUTH / LADIES / GIRLS



ECLIPSE WARM-UP

ADULT / YOUTH



STOCK WARM-UPS

MARCH IN STYLE AND COMFORT.

Nothing shows unity like coordinating warm-ups that make a statement. GTM's 2015 line features pieces that combine fashion with athleticism to create a functional look that doesn't sacrifice style.

Great Alternatives To The Traditional Marching Uniform

- Garments wash easily at home to save time and money.
- Versatile for both on and off the field.
- Warm-ups and fleece protect from the elements and offer increased mobility and comfort.

Performance Fleece

Best For: All-around comfort and warmth.



Rogue
PG 7

Mixed Fabric

Best For: Staying warm in a stylish look.



Alliance
PG 8

Waterproof

Best for: Powering through wind and rain.



Torrent
PG 17



WATERPROOF GEAR

The Torrent features an all-weather shell designed to repel wind and water, keeping you warm and dry.

Poly Tricot

Best For: Staying comfortable in noise-free, wrinkle-resistant fabric.



Apex PG 10 **Horizon** PG 11 **Infinity** PG 12 **Advantage** PG 13

Micro-Poly

Best For: Outdoor warmth and water resistance.



MVP PG 14 **Defiance** PG 15 **Trainer** PG 16

All-Season Poly

Best For: Lightweight warmth with wind resistance.



Rival PG 18 **Titan** PG 19

Jackets

Best For: Layering for added warmth and style.



Stadium Jacket PG 20 **GTM's Varsity Jacket** PG 20

NEW AVAILABLE IN LADIES'

ROGUE WARM-UP \$70 (Blank)

Jacket Colors: Black/Red (5), Graphite/Black (5), Red/Graphite (M), Royal/Graphite, Navy/Graphite, Purple/Graphite (M), Hot Pink/Graphite (L)

Pant Colors: Black, Graphite

Jacket \$35: Men's 1501TU, Ladies' 1501TL

Pant \$35: Men's 1501BU, Men's Athletic Cut 1502BU; Ladies' Athletic Cut 1502BL

Jacket Sizes: Men's XS-3XL, Ladies' XS-2XL

Pant Sizes \$35: Men's XS-5XL, Men's Athletic Cut XS-3XL; Ladies' Athletic Cut XS-2XL

- Polyester/Spandex Performance Fleece
- Interior Continuous Pocket (Jacket)
- Ankle Zip
- Headphone Port In Pocket (Jacket)
- Elastic Waistband With Interior Drawstring
- Imported

Pricing With GTM Left Chest Embroidery Design:

Qty	1	2-6	7-11	12-35	36-71	72+
Jacket Only	\$52	\$46	\$44	\$42	\$41	\$40
Warm-up	\$87	\$81	\$79	\$77	\$76	\$75

(5)=Available Up To 5XL, (M)=Men's Only; (L)=Ladies' Only, Upcharges: 2XL=\$2, 3XL=\$4, 4XL=\$8, 5XL=\$11; Design Shown: E14111; E14112

Available In:

MENS / LADIES



Add A Full Back Art Design
PG 46



Performance Fleece

This flexible fabric provides a stylish look and a comfortable fit. You can't go wrong with this soft and smooth warm-up.

STOCK WARM-UPS



FREE
— LEFT CHEST —
EMBROIDERY

WITH PURCHASE OF
STOCK WARM-UP

CLASSIC COMFORT CO-ED

Outfit the entire team in this new co-ed inspired style that maintains a classic look. The embossed pattern on the front and back provides an added punch of style that makes this warm-up unlike any others.



This New Pattern Adds A Pop Of Style Everyone Will Love.

NEW

ALLIANCE WARM-UP \$70 (Blank)

Jacket Colors: Black/Graphite, Black/Red, Graphite/Navy, Graphite/Royal

Pant Colors: Black, Graphite, Navy (L), Red (L), Royal (L)

Jacket \$50: Men's 1509TU; Ladies' 1509TL

Sizes: Men's XS-3XL; Ladies' XS-2XL

Pant \$20: Men's 1701BU; Ladies' 1710BL

Sizes: Men's XS-3XL; Ladies' XS-2XL

- Micro-Poly (Polyester Microfilament) & Polyester/Spandex Performance Fleece
- Pant: Micro-Poly (Polyester Microfilament)
- Stretch Performance Fleece Hood, Cuffs And Bottom Band
- Zip-secured Pockets (Jacket)
- Athletic Cut With Raglan Sleeves
- Elastic Waistband With Drawstring (Pant)
- Ankle Zip
- Imported

Pricing With GTM Left Chest Embroidery Design:

Qty	1	2-6	7-11	12-35	36-71	72+
Jacket Only	\$67	\$61	\$59	\$57	\$56	\$55
Warm-up	\$87	\$81	\$79	\$77	\$76	\$75

Also Pairs With Athletic Cut Performance Fleece Pant \$35. PG 7

(L)-Available In Ladies' Only

Upcharges: 2XL-\$2, 3XL-\$4; Design Shown: E1572

Available In:

MENS / LADIES



FREE
— LEFT CHEST —
EMBROIDERY
.....
WITH PURCHASE OF
STOCK WARM-UP

MAKE IT PERSONAL®

1. Pick Your Product

From warm-ups to uniforms, tees and accessories, GTM has a variety of styles and colors for you to choose from.



2. Pick An Art Design

Get inspired by thousands of design templates or submit your own custom art.



3. Make It Personal®

Easily customize your art design to create the team look you want with your team name, colors and mascot.



4. Order It

To place your order, call 1.877.245.4757 or email service@gtmsportswear.com. We make reordering easy by keeping your art designs on file.

MAKE IT PERSONAL®

1. Pick Your Product

From warm-ups to uniforms, tees and accessories, GTM has a variety of styles and colors for you to choose from.



2. Pick An Art Design

Get inspired by thousands of design templates or submit your own custom art.



3. Make It Personal®

Easily customize your art design to create the team look you want with your team name, colors and mascot.



4. Order It

To place your order, call 1.877.245.4757 or email service@gtmsportswear.com. We make reordering easy by keeping your art designs on file.



APEX WARM-UP \$55 (Blank)

Colors: Black/White, Forest/White, Maroon/White, Navy/White, Purple/White, Red/White, Royal/White, Black/Gold, Black/Red, Black/Orange

Jacket \$35: Adult PT12TU; Youth PT12TY

Pant \$20: Adult PT12BU; Youth PT12BY

Sizes: Adult XS-3XL; Youth XS-L

- 100% Polyester Tricot Knit
- On-seam, Zippered Pockets (Jacket)
- Cordlock Adjustment At Hem
- Side Seam Pockets (Pant)
- Imported
- Set-in Sleeves
- Elastic Cuff
- Full Elastic Waistband With Drawstring
- Ankle Zip

Pricing With GTM Left Chest Embroidery Design:

Qty	1	2-6	7-11	12-35	36-71	72+
Jacket Only	\$52	\$46	\$44	\$42	\$41	\$40
Warm-up	\$72	\$66	\$64	\$62	\$61	\$60

Upcharges: 2XL=\$2, 3XL=\$4; Design Show: E0406; E13122

Available In:

ADULT **YOUTH**



STOCK
WARM-UPS

HORIZON WARM-UP \$65 (Blank)

Jacket Colors: Graphite/Red, Graphite/Royal, Graphite/Navy, Graphite/Purple, Graphite/Forest, Graphite/Maroon, Black/Graphite

Pant Colors: Black, Graphite

Jacket \$40: Adult PT18TU; Youth PT18TY

Pant \$25: Adult PT18BU; Youth PT18BY; Ladies' PT14BL; Girls' PT14BG

Sizes: Adult XS-3XL; Youth S-L; Ladies' XS-2XL; Girls' XXS-L

- 100% Polyester Tricot Knit
- Zippered Pockets (Jacket)
- Headphone Port In Right Pocket (Jacket)
- Rib Knit Cuffs And Waistband (Jacket)
- Elastic Waistband With Interior Drawstring (Pant)
- Side Seam Pockets (Adult And Youth Pant)
- Slash Pockets (Ladies' And Girls' Pant)
- Interior Drawstring (Pant)
- Ankle Zip (Adult And Youth)
- Imported

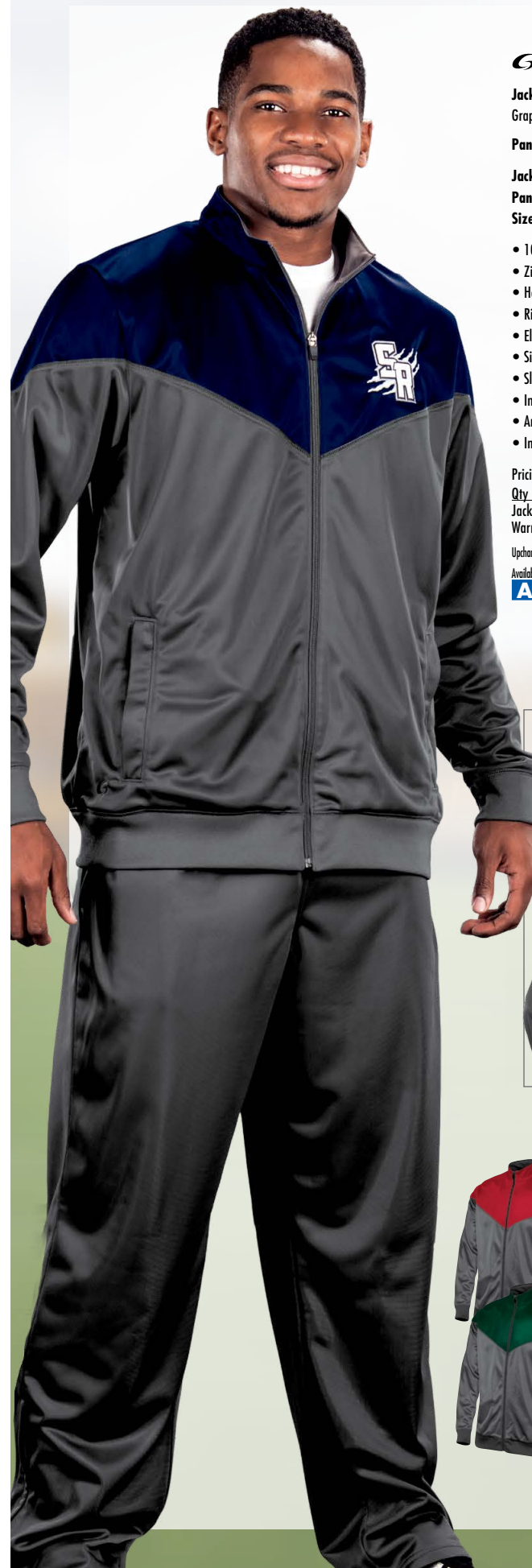
Pricing With GTM Left Chest Embroidery Design:

Qty	1	2-6	7-11	12-35	36-71	72+
Jacket Only	\$57	\$51	\$49	\$47	\$46	\$45
Warm-up	\$82	\$76	\$74	\$72	\$71	\$70

Upcharges: 2XL=\$2, 3XL=\$4; Design Show: E1430; E1431

Available In:

ADULT **YOUTH**



Add A Full Back Art Design
PG 46



G INFINITY WARM-UP \$60 (Blank)

Colors: Black/White, Forest/White, Maroon/White, Navy/White, Purple/White, Red/White, Royal/White, Cardinal/White, Brown/White, Black/Gold, Black/Purple, Black/Royal, Black Red, Col. Blue/White, Kelly/White,

Jacket \$35: Men's PT06TU; Ladies' PT06TL; Youth PT06TY

Pant \$25: Men's PT06BU; Ladies' PT06BL; Youth PT06BY

Sizes: Men's S-3XL; Ladies' S-2XL; Youth XXS-L

- 100% Polyester Tricot Knit
- On-seam, Zippered Pockets (Jacket)
- Elastic Waistband With Drawstring (Pant)
- Side Seam Pockets (Pant)
- Imported

Pricing With GTM Left Chest Embroidery Design:

Qty	1	2-6	7-11	12-35	36-71	72+
Jacket Only	\$52	\$46	\$44	\$42	\$41	\$40
Warm-up	\$77	\$71	\$69	\$67	\$66	\$65

White Body Available In Men's Sizes Only.

Upcharges: 2XL-S2, 3XL-S4; Design Shown: E13188; E1381

Available In:

MENS / LADIES / YOUTH



Add A Full Back Art Design
PG 46

WARM-UPS TO FIT ALL BUDGETS

G ADVANTAGE WARM-UP \$40 (Blank)

Colors: Black/White, Forest/White, Maroon/White, Navy/White, Purple/White, Red/White, Royal/White

Jacket \$25: Adult PT10TU; Youth PT10TY

Pant \$15: Adult PT10BU; Youth PT10BY

Sizes: Adult S-3XL; Youth XXS-L

- 100% Polyester Tricot Knit
- Front Slash Pockets (Jacket)
- Elastic Waistband With Drawstring
- Adjustable Closure At Hem
- Imported

Pricing With GTM Left Chest Embroidery Design:

Qty	1	2-6	7-11	12-35	36-71	72+
Jacket Only	\$42	\$36	\$34	\$32	\$31	\$30
Warm-up	\$57	\$51	\$49	\$47	\$46	\$45

Upcharges: 2XL-S2, 3XL-S4; Design Shown: E14271; E14272

Available In:

ADULT / YOUTH



Add A Full Back Art Design
PG 46



FREE
— LEFT CHEST —
EMBROIDERY
.....
WITH PURCHASE OF
STOCK WARM-UP

G MVP WARM-UP \$70 (Blank)

Colors: Black/Gold/White, Black/Red/White, Black/Silver/White, Forest/Black/White, Maroon/Black/White, Navy/Silver/White, Purple/Black/White, Red/Black/White, Royal/Black/White

Jacket S45: Adult 1700TU; Youth 1700TY

Pant S25: Adult 1700BU; Youth 1700BY

Sizes: Adult XS-3XL; Youth S-L

- 100% Polyester Microfilament Shell
- Water Resistant
- No Drawstring In Youth Hood
- Elastic Cuffs (Jacket)
- Side Seam Pockets (Pant)
- Ankle Zip
- Polyester/Cotton Jersey Lining
- Detachable Hood
- On-seam, Zippered Pockets (Jacket)
- Drop Tail (Jacket)
- Elastic Waistband With Drawstring (Pant)
- Imported

Pricing With GTM Left Chest Embroidery Design:

Qty	1	2-6	7-11	12-35	36-71	72+
Jacket Only	\$62	\$56	\$54	\$52	\$51	\$50
Warm-up	\$87	\$81	\$79	\$77	\$76	\$75

Upcharges: 2XL-S2, 3XL-S4; Design Show: E13107; E13106

Available In:

ADULT / YOUTH



Add A Full Back Art Design
PG 46

G2M DEFIANCE WARM-UP \$60 (Blank)

Jacket Colors: Black/Red, Black/Orange, Black/Gold, Graphite/Navy, Graphite/Purple, Black/White, Graphite/White, Graphite/Red, Graphite/Royal

Pant Colors: Black, Graphite

Jacket S40: Adult 1701TU; Youth 1701TY

Pant S20: Adult 1701BU; Youth 1701BY

Sizes: Adult XS-3XL; Youth S-L

- 100% Polyester Microfilament Shell
- Water Resistant
- No Drawstring In Youth Hood
- Set-in Sleeves With Elastic Cuffs
- Side Seam Pockets (Pant)
- Ankle Zip
- Performance Lining With G2M Moisture Management
- Detachable Hood
- On-seam, Zippered Pockets (Jacket)
- Drop Tail
- Elastic Waistband With Drawstring (Pant)
- Imported

Pricing With GTM Left Chest Embroidery Design:

Qty	1	2-6	7-11	12-35	36-71	72+
Jacket Only	\$57	\$51	\$49	\$47	\$46	\$45
Warm-up	\$77	\$71	\$69	\$67	\$66	\$65

Upcharges: 2XL-S2, 3XL-S4; Design Show: E1358; PW12; E1357

Available In:

ADULT / YOUTH



Add A Full Back Art Design
PG 46



G2M® Moisture Management

Designed to pull moisture away from the body, keeping you cool and dry.

G TRAINER WARM-UP \$35 (Blank)

Jacket Colors: Black/White, Forest/White, Maroon/White, Navy/White, Purple/White, Red/White, Royal/White

Pant Colors: Black, Forest, Maroon, Navy, Purple, Red, Royal

Jacket \$20: Adult 1709TU; Youth 1709TY

Pant \$15: Adult 1709BU; Youth 1709BY

Sizes: Adult S-6XL; Youth XXS-L

- 100% Polyester Microfilament Shell
- 100% Polyester Mesh Lining
- Water Resistant
- On-seam Pockets (Jacket)
- Elastic Waistband With Drawstring
- Adjustable Closure At Hem (Pant)
- Imported

Pricing With GTM Left Chest Embroidery Design:

Qty	1	2-6	7-11	12-35	36-71	72+
Jacket Only	\$37	\$31	\$29	\$27	\$26	\$25
Warm-up	\$52	\$46	\$44	\$42	\$41	\$40

Upcharges: 2XL=\$2, 3XL=\$4; Design Show: E0406; E0650

Available In:

ADULT / YOUTH

Warm-ups To Fit Any Budget!



Add A Full Back Art Design
PG 46



PERFORM UNDER ANY CONDITION

Waterproof Fabric



GTM waterproof apparel features an all-weather shell designed to repel wind and water, keeping you warm and dry.

G TORRENT WARM-UP \$115

 (Blank)

Jacket Colors: Black/Black, Black/White, Royal/White, Red/White, Navy/White, Purple/White, Maroon/White, Forest/White

Pant Colors: Black, Royal, Red, Navy, Purple, Maroon, Forest

Jacket \$70: Men's 8007TU Ladies' 8007L

Sizes: Men's S-3XL; Ladies' S-2XL

Pant \$45: Men's 8008BU; Ladies' 8008BL

Sizes: Men's XS-4XL; Ladies' XS-2XL

- 100% Micro-poly Shell
- Performance Lining With G2M Moisture Management
- Waterproof With Sealed Seams
- Hood With Bill
- Drop Tail
- Zippered, Reverse Entry Pockets
- Pant Available In Solid Colors Only • Imported

Pricing With GTM Left Chest Embroidery Design:

Qty	1	2-6	7-11	12-35	36-71	72+
Jacket Only	\$87	\$81	\$79	\$77	\$76	\$75
Warm-up	\$132	\$126	\$124	\$122	\$121	\$120

Upcharges: 2XL=\$2, 3XL=\$4, 4XL=\$8; Design Show: E14286; E0411

Available In:

MENS / LADIES



Add A Full Back Art Design
PG 46



FREE
— LEFT CHEST —
EMBROIDERY
.....
WITH PURCHASE OF
STOCK WARM-UP

G RIVAL WARM-UP \$50 (Blank)

Colors: Black/White, Black/Gold, Forest/White, Navy/White, Purple/White, Red/White, Royal/White, Maroon/White, Black/Red

Jacket \$30: Adult 3510TU; Youth 3510TY

Sizes: Adult XS-3XL; Youth XS-L

Pant \$20: Men's 3505BU; Ladies' 3505BL; Youth 3505BY

Sizes: Men's S-6XL; Ladies' S-2XL; Youth XS-L

- 100% Polyester, Fully Lined
- Body Is Lined With Polyester/Cotton Jersey
- Cordlock Adjustment At Hem
- Detachable Hood
- No Drawstring In Youth Hood
- Zippered Slash Pockets (Jacket)
- Elastic Cuffs
- Ankle Zip
- Imported

Pricing With GTM Left Chest Embroidery Design:

Qty	1	2-6	7-11	12-35	36-71	72+
Jacket Only	\$47	\$41	\$39	\$37	\$36	\$35
Warm-up	\$67	\$61	\$59	\$57	\$56	\$55

Upcharges: 2XL=\$2, 3XL=\$4, 4XL=\$8, 5XL=\$11, 6XL=\$14; Design Shown: E1201; E14290

Available In:

ADULT **YOUTH**



Add A Full Back Art Design
PG 46



Available
Up To 6XL

G TITAN WARM-UP \$45 (Blank)

Colors: Black/White, Black/Gold, Forest/White, Navy/White, Purple/White, Red/White, Royal/White, Maroon/White, Black/Red

Jacket \$25: Men's 3505TU; Ladies' 3505TL; Youth 3505TY

Pant \$20: Men's 3505BU; Ladies' 3505BL; Youth 3505BY

Sizes: Men's S-6XL; Ladies' S-2XL; Youth XS-L

- 100% Polyester Shell
- Water Resistant
- No Drawstring In Youth Hood
- Ankle Zip
- Polyester/Cotton Jersey Lining
- Detachable Hood
- Elastic Waistband With Drawstring
- Imported

Pricing With GTM Left Chest Embroidery Design:

Qty	1	2-6	7-11	12-35	36-71	72+
Jacket Only	\$42	\$36	\$34	\$32	\$31	\$30
Warm-up	\$62	\$56	\$54	\$52	\$51	\$50

Upcharges: 2XL=\$2, 3XL=\$4, 4XL=\$8, 5XL=\$11, 6XL=\$14; Design Shown: E1356; E13225

Available In:

MENS **LADIES** **YOUTH**



MAKE IT PERSONAL®

1. Pick Your Product

From warm-ups to uniforms, tees and accessories, GTM has a variety of styles and colors for you to choose from.



2. Pick An Art Design

Get inspired by thousands of design templates or submit your own custom art.



3. Make It Personal®

Easily customize your art design to create the team look you want with your team name, colors and mascot.



4. Order It

To place your order, call 1.877.245.4757 or email service@gtmsportswear.com. We make reordering easy by keeping your art designs on file.

CLASSIC STYLES, CUSTOMIZED LOOKS

Stay Warm While Representing The Band.



NEW
NOW
AVAILABLE
IN MEN'S

STADIUM JACKET \$29 (Blank)

Colors: Black, Forest, Maroon, Navy, Purple, Red, Royal, Graphite

Item: Adult 1550TU; Youth 1550TY

Sizes: Adult XS-3XL; Youth S-L

- 100% Polyester
- Diamond Pattern Texture
- Heavyweight Fleece Lining
- Water Resistant
- No Drawstring In Youth Hood
- Slash Pockets
- Elastic Cuffs
- Cordlock Adjustments At Hem
- Imported

Pricing With GTM Left Chest Embroidery Design:

Qty	1	2-6	7-11	12-35	36-71	72+
Jacket	\$46	\$40	\$38	\$36	\$35	\$34

Upcharges: 2XL-\$2, 3XL-\$4; Design Show: E14103; T14-B02

Available In:

ADULT / YOUTH



NEW AVAILABLE IN MEN'S

GTM'S VARSITY JACKET \$40 (Blank)

Colors: Red/Black/White, Royal/Black/White, Charcoal Heather/Black/White, Navy/Charcoal Heather/White, Purple/Charcoal Heather/White

Item: Men's F210TU; Ladies' F210TL; Girls' F210TG

Sizes: Men's S-3XL; Ladies' XS-2XL; Girls' XS-L

- 11oz. Cotton/Polyester Blend
- Snap Closures
- Imported

Pricing With GTM Left Chest Embroidery Design:

Qty	1	2-6	7-11	12-35	36-71	72+
Jacket	\$57	\$51	\$49	\$47	\$46	\$45

Upcharges: 2XL-\$2, 3XL-\$4; Design Show: E14101; T14-B01

Available In:

MENS / LADIES / GIRLS



COLOR GUARD

Move seamlessly and comfortably during every performance and practice with GTM's color guard warm-ups and uniforms. Create a coordinating team look by adding art designs in our wide selection of embellishment processes.

STOCK UNIFORMS

Best For: Stretching and moving during performance.



Ballistic
PG 24

Scorpion
PG 24

Groove Collection
PG 25

ULTRAFUSE™ TOPS

Best For: Making A Bold Statement With Eye-Catching Designs. See PG 22



STOCK WARM-UPS

Best For: Staying comfortable and stylish before and after performances.



Charisma
PG 26

Elevate
PG 27

Ambition
PG 28

Crush
PG 29



Illusion
PG 30

Propel
PG 31

Inspire
PG 32

Triumph
PG 32



Xtreme
PG 33

Challenger
PG 33

FREE
— LEFT CHEST —
EMBROIDERY

WITH PURCHASE OF
STOCK WARM-UP

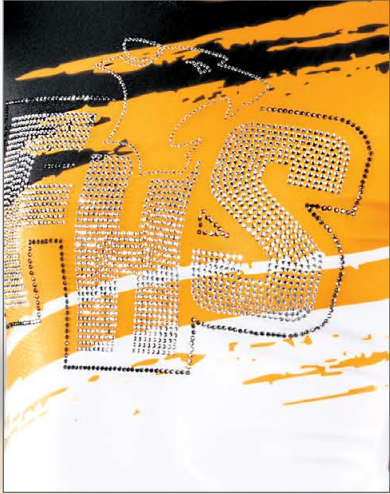
ULTRAFUSE™

SUBLIMATED COLOR GUARD TOPS

WITH G2M® MOISTURE MANAGEMENT

UF COLOR GUARD WARM-UPS

REBEL® TOP
LADIES / GIRLS



Add A Rhinestone Design For Extra Bling! PG 47



ULTRA You

Your logo, your colors and your design. Unite your team in style with UltraFuse.



Customize With Your Team Name And Logo



Add A Rhinestone Design For Extra Bling! PG 47

ROYALE® TOP
LADIES / GIRLS



ULTRA Color

Create your team look with the boldest, brightest colors in standout designs that are heat-infused directly into the fabric.



DREAM® TOP
LADIES / GIRLS



ULTRA Comfort

Lightweight and breathable for ultimate stretch and movement.

SHATTER® TOP
LADIES / GIRLS



FREESTYLE® TOP
LADIES / GIRLS



NOUVEAU® TOP
LADIES / GIRLS



UF ULTRAFUSE COLOR GUARD TOPS

TOP \$70: U112TL, U112TG

SIZES: LADIES' XS-2XL; GIRLS' XXS-L

Upcharges: 2XL=\$2

- Polyester/Spandex
- G2M® Moisture Management Technology
- Made In U.S.A. & Imported

Minimum quantity 6 on initial order. Order ships within 5-7 weeks after art and credit approval. Call your sales rep for specific delivery date.



Electric Pink, Blaze Yellow, Blaze Red, Teal, Lime, White, Black, Graphite, Silver, Brown, Vegas Gold, Athletic Gold, Orange, Red, Hot Pink, Purple, Navy, Royal, Columbia Blue, Turquoise, Forest, Texas Orange, Maroon, Cardinal, Kelly, Electric Blue, Army Green, Aqua Splash, Atomic Green, Fuchsia, Lavender Mist, Citrus, Hot Coral

Custom art available, call for pricing and details. 1.877.245.4757 23

MOVE FREELY WITH **STUNNING STYLE**



SpiritFlex™

GTM's high performance SpiritFlex fabric features full-motion flexibility that provides maximum comfort and stretch.

Groove Pant
PG 25

NEW

BALLISTIC TOP \$50 (Blank)

Colors: Black/White/Metallic Silver, Navy/White/Metallic Silver, Red/Black/White, Royal/Black/White, White/Black/Metallic Silver

Item: Ladies' 1146TL; Girls' 1146TG
Sizes: Ladies' XS-2XL; Girls' S-L

- SpiritFlex™ (Polyester/Spandex)
- Contrast Piping Detail Adds Additional Color
- Fitted Comfort With Four-way Stretch
- Boatneck Neckline
- Imported

Pricing With GTM Twill Design:

Qty	1	2-6	7-11	12-35	36-71	72+
	\$80	\$73	\$71	\$67	\$66	\$65

Upcharges: 2XL-S2; Design Show: E15100

Available In:

LADIES / GIRLS

SCORPION TOP \$55 (Blank)

Colors: Black/M. Silver/White, Black/M. Gold/White, Black/M. Red/White, Black/M. Purple/White, Black/M. Royal/White, Royal/M. Silver/Black

Item: Ladies' 1114TL; Girls' 1114TG
Sizes: Ladies' S-2XL; Girls' XXS-L

- Polyester/Spandex SpiritFlex™
- Nylon/Spandex Trim
- Hand Wash Only
- Imported

Pricing With GTM Twill Design:

Qty	1	2-6	7-11	12-35	36-71	72+
	\$85	\$78	\$76	\$72	\$71	\$70

Upcharges: 2XL-S2; Design Show: E13156

Available In:

LADIES / GIRLS



GROOVE COLLECTION
THE LONG AND SHORT OF IT.

COLOR GUARD
WARM-UPS

LONG AND SLIM FIT



G GROOVE ANKLE TIGHT \$24 (Blank)

Black

Item: Ladies' 0511BL; Girls' 0511BG

Sizes: Ladies' XS-2XL; Girls' XS-L

Inseam: 28"

- Polyester/Spandex SpiritFlex™
- Imported

Pricing With GTM One-color Sport Grip Design:

Qty	1	2-6	7-11	12-23	24+
	\$31.50	\$30.50	\$29.50	\$28.50	\$27.50

Upcharges: 2XL-S2

Available In:

LADIES / GIRLS

MID-LENGTH SLIM FIT



G GROOVE CAPRI \$20 (Blank)

Black

Item: Ladies' 0510BL; Girls' 0510BG

Sizes: Ladies' XS-2XL; Girls' XS-L

Inseam: 18"

- Polyester/Spandex SpiritFlex™
- Imported

Pricing With GTM One-color Sport Grip Design:

Qty	1	2-6	7-11	12-23	24+
	\$27.50	\$26.50	\$25.50	\$24.50	\$23.50

Upcharges: 2XL-S2

Available In:

LADIES / GIRLS

SHORT AND SLIM FIT



G GROOVE SHORT \$15 (Blank)

Black

Item: Ladies' 0509BL; Girls' 0509BG

Sizes: Ladies' XS-2XL; Girls' XS-L

Inseam: 2 1/2"

- Polyester/Spandex SpiritFlex™
- Imported

Pricing With GTM One-color Sport Grip Design:

Qty	1	2-6	7-11	12-23	24+
	\$22.50	\$21.50	\$20.50	\$19.50	\$18.50

Upcharges: 2XL-S2

Available In:

LADIES / GIRLS

LONG AND STRAIGHT FIT



G GROOVE PANT \$24 (Blank)

Black

Item: Ladies' 0508BL; Girls' 0508BG

Sizes: Ladies' XS-2XL; Girls' XS-L

Inseam: 34"

- Polyester/Spandex SpiritFlex™
- Imported
- Extra Length For Easy Alterations

Pricing With GTM One-color Sport Grip Design:

Qty	1	2-6	7-11	12-23	24+
	\$31.50	\$30.50	\$29.50	\$28.50	\$27.50

Upcharges: 2XL-S2

Available In:

LADIES / GIRLS

ATHLETIC CHIC

Prepare for performances comfortably and stylishly in the new Charisma Warm-up. The Micro-Poly and Brushed SpiritFlex combination is durable and moves with your body, while the clever color-blocking placement creates an ultra-flattering look. GTM's new Cozy Cuffs™ may look like regular jacket cuffs, but fold them down to cover your hands to protect them from the cold.



Add A Full Back Art Design
PG 46

NEW

ELEVATE WARM-UP \$85 (Blank)

Jacket Colors: Black/Fuchsia/White, Navy/White/Metallic Silver, Royal/Black/White, Black/Gold/White, Black/Red/White, Black/White/Metallic Silver

Pant Colors: Black, Navy, Royal

Jacket \$55: Ladies' SF05TL; Girls' SF05TG **Pant \$30:** Ladies' SF03BL; Girls' SF03BG

Jacket Sizes: Ladies' XS-2XL; Girls' S-L **Pant Sizes:** Ladies' XS-2XL; Girls' XXS-L

- Brushed SpiritFlex™ (Polyester/Spandex)
- Full-motion Stretch With Maximum Comfort
- Feminine, Flattering Fit
- Thumbholes In Cuffs Keep Sleeves In Place
- Zip-secured Pockets
- Headphone Port
- Elastic Waistband (Pant)
- Imported

Pricing With GTM Left Chest Embroidery Design:

Qty	1	2-6	7-11	12-35	36-71	72+
Jacket Only	\$72	\$66	\$64	\$62	\$61	\$60
Warm-up	\$102	\$96	\$94	\$92	\$91	\$90

Upcharges: 2XL=\$2; Design Shown: E1599; T15-TRSP08

Available In:

LADIES / GIRLS



Add A Full Back Art Design
PG 46



NEW

CHARISMA WARM-UP \$85 (Blank)

Jacket Colors: Atomic Green/Black, Black/Black, Graphite/Navy, Hot Pink/Black, Red/Black, Royal/Black

Pant Colors: Black, Navy, Royal

Jacket \$55: Ladies' 1710TL; Girls' 1710TG **Sizes:** Ladies' XS-2XL; Girls' XS-L

Pant \$30: Ladies' SF03BL; Girls' SF03BG **Sizes:** Ladies' XS-2XL; Girls' XXS-L

- Jacket: Brushed SpiritFlex™ (Polyester/Spandex) & Micro-Poly (Polyester Microfilament)
- Pant: Brushed SpiritFlex™ (Polyester/Spandex)
- Sleek Fabric With Maximum Stretch In A Form-fitting Cut
- Zip-secured Pockets (Jacket)
- Zipper Garage Prevents Chin Chaffing
- Foldover Cozy Cuffs™ Keep Hands Warm
- Thumbholes In Cuffs Keep Sleeves In Place
- Headphone Port
- Elastic Waistband (Pant)
- Imported

Pricing With GTM Left Chest Embroidery Design:

Qty	1	2-6	7-11	12-35	36-71	72+
Jacket Only	\$72	\$66	\$64	\$62	\$61	\$60
Warm-up	\$102	\$96	\$94	\$92	\$91	\$90

Also Pairs With Solid Micro-Poly Pant S20. Call For Details. Upcharges: 2XL=\$2; Design Shown: E1596; E1597

Available In:

LADIES / GIRLS





**Thumbholes
For Advanced
Fit And Control**

G AMBITION WARM-UP \$85 (Blank)

Jacket Colors: Hot Pink/Black, Red/Black, Navy/White, Royal/White, Black/White, Black/Lime

Pant Colors: Black, Navy, Royal

Jacket \$55: Ladies' SF03TL; Girls' SF03TG

Pant \$30: Ladies' SF03BL; Girls' SF03BG

Sizes: Ladies' XS-2XL; Girls' XXS-L

- Polyester/Spandex Brushed SpiritFlex™
- Zippered Pockets (Jacket)
- Headphone Port In Right Pocket
- Ponytail Hole
- Thumbholes
- Drop Tail
- Elastic Waistband (Pant)
- Imported

Pricing With GTM Left Chest Embroidery Design:

Qty	1	2-6	7-11	12-35	36-71	72+
Jacket Only	\$72	\$66	\$64	\$62	\$61	\$60
Warm-up	\$102	\$96	\$94	\$92	\$91	\$90

Upcharges: 2XL-S2; Design Show: E14113; T14-TRSP09

Available In:

LADIES / GIRLS



Add A Full Back Art Design
PG 46

G CRUSH WARM-UP \$80 (Blank)

Jacket Colors: Black/Hot Pink, Black/Red, Navy/White, Royal/White, Black/White

Pant Colors: Black, Navy, Royal

Jacket \$50: Ladies' SF04TL; Girls' SF04TG

Pant \$30: Ladies' SF03BL; Girls' SF03BG

Sizes: Ladies' XS-2XL; Girls' XXS-L

- Polyester/Spandex Brushed SpiritFlex™
- Ruched Detail At Neckline
- Drop Tail
- Zippered Pockets (Jacket)
- Headphone Port In Pocket
- Imported
- Thumbholes
- Interior Continuous Pocket
- Elastic Waistband (Pant)

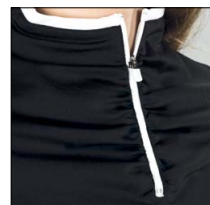
Pricing With GTM Left Chest Embroidery Design:

Qty	1	2-6	7-11	12-35	36-71	72+
Jacket Only	\$67	\$61	\$59	\$57	\$56	\$55
Warm-up	\$97	\$91	\$89	\$87	\$86	\$85

Embroidery Processes Not Available On Girls' Left Or Right Chest Placements.
Upcharges: 2XL-S2; Design Show: E1496; E1497

Available In:

LADIES / GIRLS



**Feminine
Ruched Detail**



Add A Full Back Art Design
PG 46



NEW / COLOR AVAILABLE

G ILLUSION WARM-UP \$80 (Blank)

Color: Black, Graphite



Jacket \$45: Ladies' 1508TL; Girls' 1508TG
Pant \$35: Ladies' 1508BL; Girls' 1508BG
Sizes: Ladies' XS-2XL; Girls' S-L

- Polyester/Spandex Performance Fleece
- Zippered, On-seam Pockets (Jacket)
- Ruched Detail
- Imported

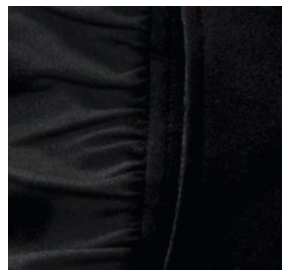
Pricing With GTM Left Chest Embroidery Design:

Qty	1	2-6	7-11	12-35	36-71	72+
Jacket Only	\$62	\$56	\$54	\$52	\$51	\$50
Warm-up	\$97	\$91	\$89	\$87	\$86	\$85

Upcharges: 2XL-S2; Design Show: E14173; T14-TSP12

Available In:

LADIES / GIRLS



Ruched Detail
On Jacket And Pant



Now Available In Graphite

G PROPEL WARM-UP \$65 (Blank)

Jacket Colors: Hot Pink/Black, Red/Black, Royal/Metallic Silver, Navy/Metallic Silver, Graphite/Black

Pant Colors: Black, Red, Royal, Navy, Graphite

Jacket \$40: Ladies' PT17TL; Girls' PT17TG

Pant \$25: Ladies' PT14BL; Girls' PT14BG

Sizes: Ladies' XS-2XL; Girls' XXS-L

- 100% Polyester Tricot Knit
- Drop Tail
- Zippered Pockets (Jacket)
- Slash Pockets (Pant)
- Interior Drawstring (Pant)
- Clean Finish Hem (Pant)
- Imported

Pricing With GTM Left Chest Embroidery Design:

Qty	1	2-6	7-11	12-35	36-71	72+
Jacket Only	\$57	\$51	\$49	\$47	\$46	\$45
Warm-up	\$82	\$76	\$74	\$72	\$71	\$70

Upcharges: 2XL-S2; Design Show: E14114; E14115

Available In:

LADIES / GIRLS



Add A Full Back Art Design

PG 46



INSPIRE WARM-UP \$70 (Blank)

Colors: Black/Red/White, Black/M. Silver/White, Black/Lime/M. Silver, Black/Hot Pink/M. Silver, Purple/Black/White, Black/Orange/White, Royal/Black/White

Jacket S40: Ladies' PT15TL; Girls' PT15TG

Pant S30: Ladies' PT15BL; Girls' PT15BG

Sizes: Ladies' XS-2XL; Girls' XXS-L

- 100% Polyester Tricot Knit
- Clean-finished Cuffs & Bottom Hem (Jacket)
- Imported
- On-seam Pockets (Jacket)
- Interior Drawstring

Pricing With GTM Left Chest Embroidery Design:

Qty	1	2-6	7-11	12-35	36-71	72+
Jacket Only	\$57	\$51	\$49	\$47	\$46	\$45
Warm-up	\$87	\$81	\$79	\$77	\$76	\$75

Upcharges: 2XL-S2; Design Shown: E1418, E14181

Available In:

LADIES / GIRLS



Add A Full Back Art Design
PG 46



XTREME WARM-UP \$70 (Blank)

Colors: Black/M. Gold/White, Black/M. Silver/White, Black/M. Silver/Lime, Black/M. Silver/Hot Pink, Navy/M. Silver/White, Black/White/Orange, Black/White/Red, Black/White/Royal, Black/White/Turquoise, Navy/White/Red, Purple/White/Gold

Jacket S40: Ladies' PT07TL; Girls' PT07TG

Pant S30: Ladies' PT07BL; Girls' PT07BG

Sizes: Ladies' S-2XL; Girls' XXS-L

- 100% Polyester Tricot Knit
- On-seam, Zippered Pockets (Jacket)
- Not Intended For Children Under 3
- Novelty Zipper Pull With Rhinestones (Jacket)
- Low-rise Pant
- Imported

Pricing With GTM Left Chest Embroidery Design:

Qty	1	2-6	7-11	12-35	36-71	72+
Jacket Only	\$57	\$51	\$49	\$47	\$46	\$45
Warm-up	\$87	\$81	\$79	\$77	\$76	\$75

Upcharges: 2XL-S2; Design Shown: E1418; E14181

Available In:

LADIES / GIRLS



**COLOR GUARD
WARM-UPS**

TRIUMPH WARM-UP \$65 (Blank)

Colors: Black/Red/White, Black/Orange/White, Black/Gold/White, Royal/Gold/White, Royal/M. Silver/White, Red/M. Silver/White, Red/Black/White, Forest/Black/White, Maroon/Black/White, Navy/Gold/White

Jacket S35: Ladies' PT16TL; Girls' PT16TG

Pant S30: Ladies' PT16BL; Girls' PT16BG

Sizes: Ladies' XS-2XL; Girls' XXS-L

- 100% Polyester Tricot Knit
- On-seam Pockets (Jacket)
- Clean-finished Cuffs & Bottom Hem (Jacket)
- Slash Pockets (Pant)
- Interior Drawstring
- Ankle Zip
- Imported

Pricing With GTM Left Chest Embroidery Design:

Qty	1	2-6	7-11	12-35	36-71	72+
Jacket Only	\$52	\$46	\$44	\$42	\$41	\$40
Warm-up	\$82	\$76	\$74	\$72	\$71	\$70

Main Body Color/Under Arm Side Stripe/Accent Stripe Color.

Upcharges: 2XL-S2; Design Shown: E0974; E0982

Available In:

LADIES / GIRLS



CHALLENGER WARM-UP \$65 (Blank)

Colors: Black/White/Orange, Black/White/Teal, Black/White/Hot Pink, Royal/White/Black, Navy/White/Red, Purple/White/Black, Black/White/Red

Outlet Colors: Black/White/Gold, Navy/White/Gold, Red/White/Black, Maroon/White/Black, Forest/White/Black, Royal/White/Gold, Navy/White/Col. Blue

Jacket S40: Ladies' PT03TL; Girls' PT03TG

Pant S25: Ladies' PT03BL; Girls' PT03BG

Sizes: Ladies' S-2XL; Girls' XXS-XL

- 100% Polyester Tricot Knit
- On-seam Front Pockets (Jacket)
- Cordlock Adjustment At Hem (Jacket)
- Elastic Waistband With Drawstring (Pant)
- Side Seam Pockets (Pant)
- Imported

Pricing With GTM Left Chest Embroidery Design:

Qty	1	2-6	7-11	12-35	36-71	72+
Jacket Only	\$57	\$51	\$49	\$47	\$46	\$45
Warm-up	\$82	\$76	\$74	\$72	\$71	\$70

Main Body Color/Under Arm Side Stripe/Accent Stripe Color.

Upcharges: 2XL-S2; Design Shown: E0974; E13254

Available In:

LADIES / GIRLS



Add A Full Back Art Design
PG 46



LIGHTWEIGHT WARMTH THAT DECLARES BAND PRIDE



Add A Full Front Art Design PG 46

CLASSIC FLEECE CREW NECK SWEATSHIRT \$17 (Blank)

Colors: Black, Forest, Heather, Maroon, Navy, Purple, Red, Royal, White, Charcoal Heather

Item: Adult F610TU
Sizes: Adult S-3XL

- 8 Oz Cotton/Polyester Blend
- Imported

Pricing With GTM One-color Screen Print Design:

Qty	1	2-6	7-11	12-23	24-35	36-71	72+
	\$37	\$26	\$24	\$22	\$19.50	\$18.50	\$17.25

Upcharges: 2XL=S2, 3XL=S4; Design Shown: T14-8T10

Available In:

ADULT

FIRST DOWN CAPRI \$16 (Blank)

Colors: Black, Heather, Charcoal Heather

Item: Ladies' F610BL; Girls' F610BG
Sizes: Ladies' S-2XL; Girls' S-L

- 8 Oz. Cotton/Polyester Blend
- Flat-fitting Elasticized Waistband With Exterior Drawstring
- Gathered Elastic Hem
- Imported

Pricing With GTM One-color Sport Grip Design:

Qty	1	2-6	7-11	12-23	24+
	\$23.50	\$22.50	\$21.50	\$20.50	\$19.50

Upcharges: 2XL=S2; Design Shown: T14-L69

Available In:

LADIES / GIRLS

CLASSIC FLEECE HOODIE \$17 (Blank)

Colors: Black, Forest, Heather, Maroon, Military Green, Navy, Purple, Red, Royal, White, Hot Pink, Lime, Charcoal Heather

Item: Adult F600TU; Youth F600TY
Sizes: Adult S-3XL; Youth S-XL

- 8 Oz Cotton/Polyester Blend
- No Drawstring In Youth Hood
- Imported

Pricing With GTM One-color Screen Print Design:

Qty	1	2-6	7-11	12-23	24-35	36-71	72+
	\$37	\$26	\$24	\$22	\$19.50	\$18.50	\$17.25

Military Green Only Available In Adult Sizes.

Upcharges: 2XL=S2, 3XL=S4; Design Shown: T14-803

Available In:

ADULT / YOUTH

CLASSIC FLEECE PANT \$15 (Blank)

Colors: Black, Forest, Heather, Maroon, Navy, Purple, Red, Royal, Charcoal Heather

Item: Adult F600BU; Youth F600BY
Sizes: Adult S-3XL; Youth S-XL

- 8 Oz Cotton/Polyester Blend
- Tapered Leg
- Imported

Pricing With GTM One-color Sport Grip Design:

Qty	1	2-6	7-11	12-23	24+
	\$22.50	\$21.50	\$20.50	\$19.50	\$18.50

Upcharges: 2XL=S2, 3XL=S4; Design Shown: T14-L69

Available In:

ADULT / YOUTH

NEW

1/4 ZIP FLEECE PULLOVER \$24 (Blank)

Colors: Black, Charcoal Heather, Heather, Purple

Item: Men's F801TU; Ladies' F801TL; Youth F801TY
Sizes: Men's XS-3XL; Ladies' XS-2XL; Youth S-L

- Classic Fleece (8 Oz Cotton/polyester Blend)
- 1/4 Zip Pullover Style
- Kangaroo Pocket
- Headphone Port In Right Side Of Pocket
- Stand-up Collar
- Rib Knit Bottom Band And Cuffs
- Imported

Pricing With GTM Left Chest Embroidery Design:

Qty	1	2-6	7-11	12-35	36-71	72+
	\$41	\$35	\$33	\$31	\$30	\$29

Upcharges: 2XL=S2, 3XL=S4; Design Shown: E1566; SPARTAN40

Available In:

MENS / LADIES / YOUTH

NEW

LADIES' OPEN BOTTOM FLEECE PANT \$20 (Blank)

Colors: Heather, Black, Charcoal Heather

Item: Ladies' F804BL; Girls' F804BG
Sizes: Ladies' XS-2XL; Girls' S-L

- Cotton/Polyester Blend
- Drawstring Waist
- Loose Fit In Legs
- Raw-edge Hem That Can Be Easily Cut To Shorten Length
- Slash Pockets
- Imported

Pricing With GTM One-color Sport Grip Design:

Qty	1	2-6	7-11	12-23	24+
	\$27.50	\$26.50	\$25.50	\$24.50	\$23.50

Pricing With GTM One-color Fashion Film Design:

Qty	1	2-6	7-11	12-23	24-35	36+
	\$30	\$29	\$28	\$27	\$25.50	\$24.50

Upcharges: 2XL=S2

Available In:

LADIES / GIRLS

NEW

ELASTIC BOTTOM FLEECE PANT \$18 (Blank)

Colors: Heather, Black, Charcoal Heather

Item: Men's F803BU; Ladies' F803BL
Sizes: Men's XS-3XL; Ladies' XS-2XL

- Cotton/Polyester Blend
- Elastic Waistband With Drawstring
- Elastic Ankle Cuffs Allow For Custom Comfort And Length
- Imported

Pricing With GTM One-color Sport Grip Design:

Qty	1	2-6	7-11	12-23	24+
	\$25.50	\$24.50	\$23.50	\$22.50	\$21.50

Pricing With GTM One-color Fashion Film Design:

Qty	1	2-6	7-11	12-23	24-35	36+
	\$28	\$27	\$26	\$25	\$23.50	\$22.50

Upcharges: 2XL=S2, 3XL=S4

Available In:

MENS / LADIES





GTM PERFORMANCE TEES
 SHORT SLEEVE **\$11** (Blank)
 LADIES' V-NECK SHORT
 SLEEVE **\$11** (Blank)
 LONG SLEEVE **\$12** (Blank)

Colors: White (4), Navy, Forest (S), Black (4), Red, Royal, Purple (4), Maroon (S), Grey, Orange (S), Columbia Blue (S), Military Green (S), Sand (S)

Short: Adult 2601TU; Ladies' 2601TL; Youth 2601TY

Sizes: Adult XS-3XL; Ladies' XS-2XL; Youth S-L

Long: Adult 2651TU

Sizes: Adult S-3XL

- 100% Polyester Microfilament Interlock
- G2M Moisture Management • Imported

Pricing With GTM One-color Screen Print Design:

Qty	1	2-6	7-11	12-23	24-35	36-71	72+
Short	\$31	\$20	\$18	\$16	\$13.50	\$12.50	\$11.25
Long	\$32	\$21	\$19	\$17	\$14.50	\$13.50	\$12.25

(4) Sizes Available Up To 4XL

(S) Adult Short Sleeve Only

(L) Ladies' Only

Adult Upcharges: 2XL-S1, 3XL-S2, 4XL-S4; Designs Shown: T13-B04; T13-LG34

Ladies Upcharges: 2XL-S2

Available In:

ADULT / LADIES / YOUTH



PACKAGE & SAVE

PACKAGE 1 \$10.99 QTY 144+

- 50/50 Tee with Two-color Screen Print
- Performance Short with One-color Screen Print



PACKAGE 2 \$27.99 QTY 144+

- 50/50 Tee with Two-color Screen Print
- Performance Short with One-color Screen Print
- Classic Fleece Hoodie with Two-color Screen Print



Upgrade to a **Performance Tee** for only **\$5** more.

Cannot be combined with other offers. Expires 6/30/15.

G2M® Moisture Management

Designed to pull moisture away from the body, keeping you cool and dry.

GTM PARAMOUNT PLUS PERFORMANCE TEES
 SHORT SLEEVE **\$22** LONG SLEEVE **\$25** (Blank)

Colors: Black/White (L), Forest/White (L), Royal/White (L), Red/White (L), Purple/White (L), Navy/White (L), Maroon/White (L), Black/Red (L), Black/Gold (L), Graphite/White (L),

Short Sleeve: Adult 2795TU **Long Sleeve:** Adult 2796TU

Sizes: Adult XS-3XL

- 100% Polyester Microfilament Double Jacquard
- G2M Moisture Management
- Anti-microbial Finish
- Imported

Pricing With GTM One-color Screen Print Design:

Qty	1	2-6	7-11	12-23	24-35	36-71	72+
Short	\$42	\$31	\$29	\$27	\$24.50	\$23.50	\$22.25
Long	\$45	\$34	\$32	\$30	\$27.50	\$26.50	\$25.25

Long Sleeve: (L)

Upcharges: 2XL-S2, 3XL-S4; Design Shown: T13-BB1

Available In:

ADULT



FREE Shipping On Orders Over \$200 | 1.877.245.4757

COTTON TEES

STARTING AT \$5

SHORT SLEEVE TEE WHITE \$5 COLOR \$6 (Blank)

LONG SLEEVE TEE WHITE \$9 COLOR \$10 (Blank)

Adult Short Sleeve: 11500TU

Ladies' Short Sleeve: 11500TL

Youth Short Sleeve: 11500TY

Short Sleeve Sizes: Adult S-5XL; Ladies' XS-3XL; Youth XS-XL

Adult Long Sleeve: 11501TU

Youth Long Sleeve: 11501TY

Long Sleeve Sizes: Adult S-5XL; Youth S-XL

- 100% Heavyweight Pre-shrunk Cotton
- Imported

Pricing With GTM One-color Screen Print Design:

Qty	1	2-6	7-11	12-23	24-35	36-71	72+
Short Sleeve							
White	\$25	\$14	\$12	\$10	\$7.50	\$6.50	\$5.25
Color	\$26	\$15	\$13	\$11	\$8.50	\$7.50	\$6.25
Long Sleeve							
White	\$29	\$18	\$16	\$14	\$11.50	\$10.50	\$9.25
Color	\$30	\$19	\$17	\$15	\$12.50	\$11.50	\$10.25

All Colors Available Thru 2XL

Call For Additional Sizes And Colors.

(L)-Ladies; (Y)-Youth

Upcharges: 2XL=\$1, 3XL=\$2, 4XL=\$4, 5XL=\$5; Design Shown: T14-BT21; T14-BT22

Available In:

ADULT / LADIES / YOUTH



Over 60 colors available! Visit gtmband.com to see them all.



G MOXIE MESH SHORT \$12 (Blank)

Colors: Black, Navy, Red, Royal, Charcoal, Blazing Yellow, Hot Pink/Black, Lime, Aqua Splash, Hot Coral, Citrus

Outlet Colors: Dewberry, Virtual Pink

Item: Ladies' 8208BL; Girls' 8208BG

Sizes: Ladies' S-2XL; Girls' S-L

Inseam: 3"

- 100% Polyester Mesh
- Elastic Waistband With Interior Drawstring
- 100% Polyester Tricot Knit Lining
- Imported

Pricing With GTM One-color Sport Grip Design:

Qty	1	2-6	7-11	12-23	24+
	\$19.50	\$18.50	\$17.50	\$16.50	\$15.50

Pricing With GTM One-color Fashion Film Design:

Qty	1	2-6	7-11	12-23	24-35	36+
	\$22	\$21	\$20	\$19	\$17.50	\$16.50

Upcharges: 2XL=\$2; Design Shown: PW16

Available In:

LADIES / GIRLS

G2M SPORT PERFORMANCE SHORT \$9 (Blank)

Colors: Black, Forest, Maroon, Navy, Purple, Silver, Red, Royal, White

Item: Adult 8209BU; Youth 8209BY

Sizes: Adult XS-3XL; Youth S-L

Inseam: Adult 9"

- 100% Polyester Sport Mesh
- G2M Moisture Management
- Elastic Waistband With Drawstring
- Imported

Pricing With GTM One-color Screen Print Design:

Qty	1	2-6	7-11	12-23	24-35	36-71	72+
	\$29	\$18	\$16	\$14	\$11.50	\$10.50	\$9.25

Upcharges: 2XL=\$2, 3XL=\$4; Design Shown: T12-LG37

Available In:

ADULT / YOUTH

SUPPORT THE BAND

ESSENTIALS FOR THE INSTRUCTOR, PARENT AND FAN.

G GAMEDAY ZIP FRONT FLEECE HOODIE \$29 (Blank)



Item: Ladies' F051TL; Girls' F051TG

Sizes: Ladies' XS-2XL; Girls' S-L

- Tri-blend Fleece (Cotton/Polyester/Rayon)
- No Drawstring On Youth Hood
- Distressed Screen Print Detail
- Raw Edges
- Imported

Pricing With GTM One-color Screen Print Design:

Qty	1	2-6	7-11	12-23	24-35	36-71	72+
	\$49	\$38	\$36	\$34	\$31.50	\$30.50	\$29.25

Upcharges: 2XL=\$2; Designs Shown: Falcon14; T13-LC11

Available In:

LADIES / GIRLS



G FANATIC TEE \$15 (Blank)



Item: Ladies' 0309TL; Girls' 0309TG

Sizes: Ladies' XS-2XL; Girls' XXS-L

- Cotton/Polyester Jersey Knit
- Imported
- Distressed Screen Print Detail

Pricing With GTM One-color Screen Print Design:

Qty	1	2-6	7-11	12-23	24-35	36-71	72+
	\$35	\$24	\$22	\$20	\$17.50	\$16.50	\$15.25

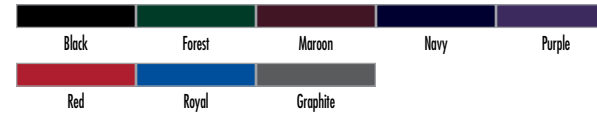
Upcharges: 2XL=\$2; Designs Shown: T13-B03

Available In:

LADIES / GIRLS



G STADIUM JACKET \$29 (Blank)



Item: Adult 1550TU; Youth 1550TY

Sizes: Adult XS-3XL; Youth S-L

- 100% Polyester
- Heavyweight Fleece Lining
- No Drawstring In Youth Hood
- Elastic Cuffs
- Imported
- Diamond Pattern Texture
- Water Resistant
- Slash Pockets
- Cordlock Adjustments At Hem

Pricing With GTM Left Chest Embroidery Design:

Qty	1	2-6	7-11	12-35	36-71	72+
Jacket	\$46	\$40	\$38	\$36	\$35	\$34

Upcharges: 2XL=\$2, 3XL=\$4; Designs Shown: T13-BT7; E13126; Falcon14

Available In:

ADULT / YOUTH





G2M CALIBER POLO \$22 (Blank)

Colors: Red/Graphite, Royal/Graphite, Navy/Graphite, Purple/Graphite, White/Graphite, Maroon/Graphite, Forest/Graphite

Item: Men's 2343TU; Ladies' 2343TL

Sizes: Men's S-3XL; Ladies' XS-2XL

- 100% Polyester
- G2M Moisture Management
- Anti-microbial Finish
- Self-fabric Collar
- Feminine 5-button Styling (Ladies')
- Imported

Pricing With GTM Left Chest Embroidery Design:

Qty	1	2-6	7-11	12-35	36-71	72+
	\$39	\$33	\$31	\$29	\$28	\$27

Upcharges: 2XL-S2, 3XL-S4; Design Show: E14291

Available In:

MENS / LADIES



G2M PARAMOUNT PLUS POLO \$26 (Blank)

Colors: Forest/White, Black/White, Maroon/White, Navy/White, Purple/White, Red/White, Royal/White, Black/Red, Black/Gold, Red/Black, White/Black, White/Navy, White/Red, White/Royal, Graphite/White

Item: Men's 2394TU; Ladies' 2394TL

Sizes: Men's S-4XL; Ladies' S-2XL

- 100% Polyester Microfilament Double Jacquard
- Self-fabric Collar
- G2M Moisture Management
- Anti-microbial Finish
- Imported

Pricing With GTM Left Chest Embroidery Design:

Qty	1	2-6	7-11	12-35	36-71	72+
	\$43	\$37	\$35	\$33	\$32	\$31

Upcharges: 2XL-S2, 3XL-S4, 4XL-S8; Design Show: E1232

Available In:

MENS / LADIES



Matching Paramount Plus Performance Tee
PG 37

G2M® Moisture Management

Designed to pull moisture away from the body, keeping you cool and dry.

G2M DRIVE POLO \$17 (Blank)

Colors: Black, Navy, Purple, Red, Royal, White, Graphite, Forest, Maroon

Item: Men's 2393TU; Ladies' 2393TL

Sizes: Men's S-3XL; Ladies' S-2XL

- 100% Polyester Microfilament Double Jacquard
- G2M Moisture Management
- Anti-microbial Finish
- Self Fabric Collar
- Feminine Styling (Ladies')
- Fitted Sleeves (Ladies')
- Johnny Collar (Ladies')
- Imported

Pricing With GTM Left Chest Embroidery Design:

Qty	1	2-6	7-11	12-35	36-71	72+
	\$34	\$28	\$26	\$24	\$23	\$22

Upcharges: 2XL-S2, 3XL-S4; Design Show: E13188; E1314

Available In:

MENS / LADIES

Polyester Microfilament Double Jacquard



NEW

RAGLAN POLO \$22 (Blank)

Colors: Athletic Heather, Black, Dark Grey Heather/Navy, Dark Grey Heather, Dark Grey Heather/Forest, Dark Grey Heather/Maroon, Dark Grey Heather/Red, Dark Grey Heather Royal, Navy, White, Dark Navy, Dark Grey Heather/Black

Item: Adult 60013TU

Sizes: Adult XS-4XL

- 100% Polyester Interlock
- Tear-away Label
- Anti-microbial To Prevent Odor
- Collar Stand
- Three-button Placket
- Sweat-wicking
- Raglan Sleeves
- Imported

Pricing With GTM Left Chest Embroidery Design:

Qty	1	2-6	7-11	12-35	36-71	72+
	\$39	\$33	\$31	\$29	\$28	\$27

Upcharges: 2XL-S2, 3XL-S4, 4XL-S8; Design Show: T145G4; E14356

Available In:

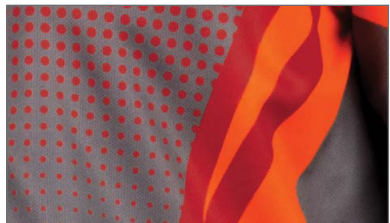
ADULT



ULTRAFUSE™ SUBLIMATED POLOS

WITH G2M® MOISTURE MANAGEMENT

FIERCE POLO
MENS / LADIES



ULTRA Color
Create your team look with the boldest, brightest colors in standout designs that are heat-infused directly into the fabric.



THE POSSIBILITIES ARE ENDLESS WITH ULTRAFUSE!

After choosing your design, customize it with over 33 color options and your team name or logo. See how the Chaos Polo transforms as colors and art designs change.



CHAOS® POLO
MENS / LADIES



ECLIPSE POLO
MENS / LADIES



CRUSHER POLO
MENS / LADIES



ULTRAFUSE™ SUBLIMATED SLING BAGS

UF ACCESSORIES

Matching
Chaos
Warm-up
PG 5



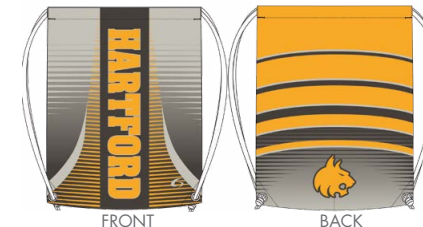
CHAOS SLING BAG®



FIERCE SLING BAG



ECLIPSE® SLING BAG



ODYSSEY SLING BAG



DREAM SLING BAG



UF COLORS AND PRICING

MEN'S POLO \$45: U230TU; SIZE: S-6XL **LADIES' POLO \$45:** U230TL; SIZE: XS-3XL

Upcharges: 2XL=\$2, 3XL=\$4, 4XL=\$8, 5XL = \$11, 6XL = \$14

- 100% Polyester
- G2M® Moisture Management Technology
- Imported

Minimum quantity 6 on initial order. Order ships within 5-7 weeks after art and credit approval. Call your sales rep for specific delivery date.



Electric Pink, Blaze Yellow, Blaze Red, Teal, Lime, White, Black, Graphite, Silver, Brown, Vegas Gold, Athletic Gold, Orange, Red, Hot Pink, Purple, Navy, Royal, Columbia Blue, Turquoise, Forest, Texas Orange, Maroon, Cardinal, Kelly, Electric Blue, Army Green, Aqua Splash, Atomic Green, Fuchsia, Lavender Mist, Citrus, Hot Coral

UF COLORS AND PRICING

SLING BAG \$30: U400NN

SIZE: 19.5" X 14.5"

- 100% Polyester
- Made In U.S.A. & Imported

Minimum quantity 6 on initial order. Order ships within 5-7 weeks after art and credit approval. Call your sales rep for specific delivery date.

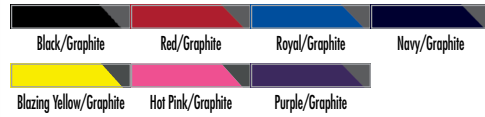


Electric Pink, Blaze Yellow, Blaze Red, Teal, Lime, White, Black, Graphite, Silver, Brown, Vegas Gold, Athletic Gold, Orange, Red, Hot Pink, Purple, Navy, Royal, Columbia Blue, Turquoise, Forest, Texas Orange, Maroon, Cardinal, Kelly, Electric Blue, Army Green, Aqua Splash, Atomic Green, Fuchsia, Lavender Mist, Citrus, Hot Coral



NEW

G HYBRID PACK \$20 (Blank)



Item: 4020NN

- 100% Polyester
- Support Of A Backpack Combined With Ease Of A Cinch Bag
- Comfortable, Padded Straps
- Cinch Closer At Top Opening
- Zip-secured And Hook-and-loop Secured Interior Pockets
- Imported

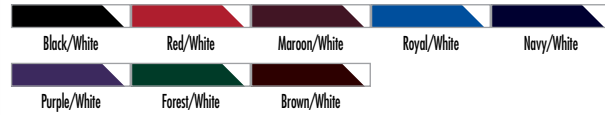
Pricing With GTM Embroidery Design:

Qty	1	2-6	7-11	12-35	36-71	72+
	\$37	\$31	\$29	\$27	\$26	\$25

Design Shown: E1553



G SIDELINE DUFFLE BAG \$26 (Blank)



Item: 4007NN

Size: 23"x12"x10.5"

- 100% Polyester Heavyweight 840 Denier Fabric With PVC Coating
- Large U-shaped Compartment
- Front Pocket With Mesh Organizer
- Zippered Side Pocket
- Detachable And Adjustable Padded Shoulder Strap
- Heavy Duty Metal Hardware
- Imported

Pricing With GTM Embroidery Design:

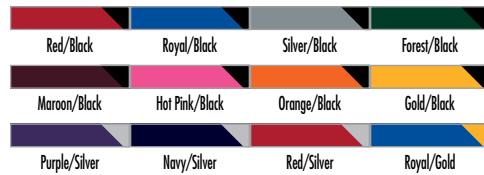
Qty	1	2-6	7-11	12-35	36-71	72+
	\$43	\$37	\$35	\$33	\$32	\$31

Design Shown: E14104



Add A Front And Back Art Design
PG 46

G PIVOT SLING BAG \$9 (Blank)



Item: 4019NN Size: 13"x17 1/2"

- 100% Polyester Coated Jacquard
- Drawstring Closure
- Imported

Pricing With GTM One-color Sport Grip Design:

Qty	1	2-6	7-11	12-23	24+
	\$16.50	\$15.50	\$14.50	\$13.50	\$12.50

Design Shown: T14-FFSP9, T14-FFSP8



G SPORT BACKPACK \$26 (Blank)



Item: 4004NN Size: 10"x 12"x 18"

- 100% Heavy Duty Sport Polyester
- Mesh Ball Compartment
- Adjustable Shoulder Straps And Hip Belt
- Headphone Port
- Imported

Pricing With GTM Embroidery Design:

Qty	1	2-6	7-11	12-35	36-71	72+
	\$43	\$37	\$35	\$33	\$32	\$31

Design Shown: E14281

SOLID BRUSHED TWILL HAT \$5 (Blank)

Item: Adult 30003AU

Size: One Size Fits Most

- 100% Cotton
- Structured, Low Profile, 6 Panel Cap
- Matching Fabric Undervisor
- Matching Fabric Adjustable Hook And Loop Closure
- Imported

Pricing With GTM Embroidery Design:

Qty	1	2-6	7-11	12-35	36-71	72+
	\$22	\$16	\$14	\$12	\$11	\$10

Design Shown: E13188

Available In:

ADULT



SIDELINE HAT \$15 (Blank)

Item: Adult 30009AU

Size: One Size Fits Most

- Evolved Polyester Micro Mesh Fabric With Moisture Wicking Functionality
- Color Blocked, Structured Crown Shape
- StayDri Performance Sweatband
- Anti-Glare Charcoal Color Under Visor And Trim Features
- Imported

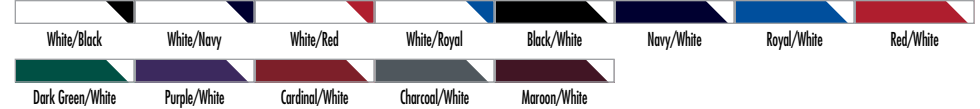
Pricing With GTM Embroidery Design:

Qty	1	2-6	7-11	12-35	36-71	72+
	\$32	\$26	\$24	\$22	\$21	\$20

Design Shown: E1376

Available In:

ADULT



PULSE FLEXFIT HAT SOLID \$14 (Blank)

COMBINATION & ALTERNATE \$16 (Blank)

Item: Solid 30010AU; Combination 30012AU; Alternate 30013AU

Sizes: Adult XS-(6⁵/₈-7)/S-M(7-7¹/₄)/L-XL(7³/₈-7⁵/₈)

- Evolved Polyester-spandex Fabric With Moisture Management
- StayDri Comfort-stretch Sweatband
- Provisor With Eight Rows Of Stitching
- Anti-Glare Charcoal-Color Undervisor And Trim Features
- Imported

Pricing With GTM Embroidery Design:

Qty	1	2-6	7-11	12-35	36-71	72+
Solid	\$31	\$25	\$23	\$21	\$20	\$19
Combination	\$33	\$27	\$25	\$23	\$22	\$21
Alternate	\$33	\$27	\$25	\$23	\$22	\$21

Design Shown: E1374

Available In:

ADULT

A. Front/Bill Colors (HPTS20A):



B. Solid Colors (HPTS20S):

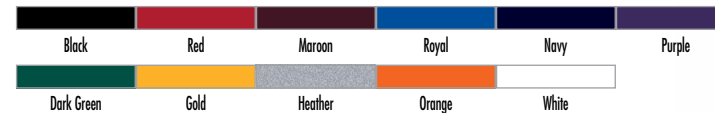


C. Crown/Bill Colors (HPTS20C):



ADDITIONAL COLORS SHOWN ONLINE

KNIT BEANIE \$4 (Blank)



Item: Adult 31000AU

Size: One Size Fits Most

- 100% Acrylic
- Imported

Pricing With GTM Embroidery Design:

Qty	1	2-6	7-11	12-35	36-71	72+
	\$21	\$15	\$13	\$11	\$10	\$9

Design Shown: PW35

Available In:

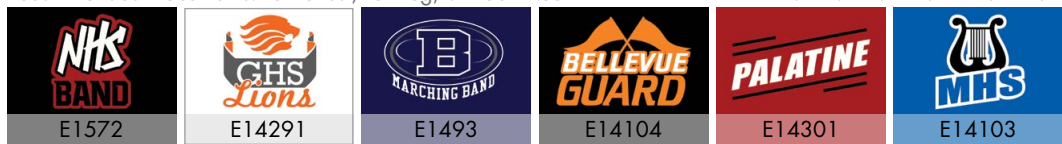
ADULT



SMALL EMBROIDERY

Recommended Placements: Left Chest, Left Leg, or Back Neck

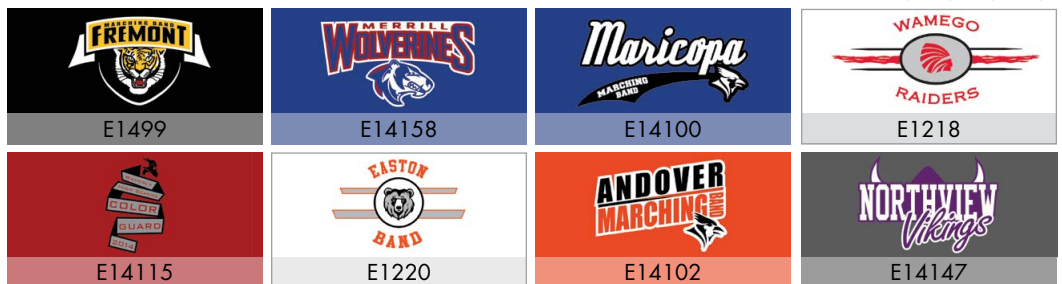
QTY	1	2-6	7-11	12-35	36-71	72+
	\$17	\$11	\$9	\$7	\$6	\$5



LARGE EMBROIDERY

Recommended Placements: Full Front or Full Back

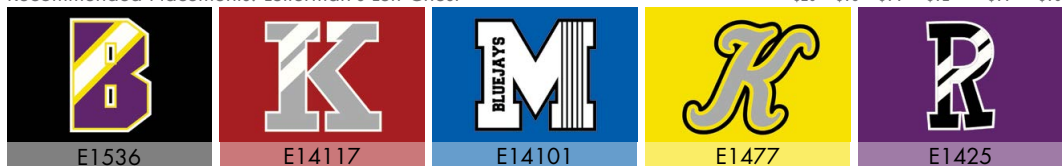
QTY	1	2-6	7-11	12+
	\$29	\$18	\$16	\$14



LETTERMAN'S LEFT CHEST TWILL

Recommended Placements: Letterman's Left Chest

QTY	1-2	3-6	7-11	12-35	36-71	72+
	\$20	\$16	\$14	\$12	\$11	\$10



LARGE TWILL

Recommended Placements: Full Front or Full Back

QTY	1-2	3-6	7-11	12-35	36-71	72+
	\$30	\$23	\$21	\$17	\$16	\$15



SPECIALTY TWILL

Recommended Placements: Full Front or Full Back

QTY	1	2-6	7-11	12-35	36-71	72+
	\$37	\$30	\$28	\$26	\$24	\$23



SHIMMER DESIGNS

Recommended Placements: Full front or Full Back

QTY	1-2	3-6	7-11	12-35	36-71	72+
	\$33	\$26	\$24	\$20	\$19	\$18



TWILL WITH RHINESTONES

Recommended Placements: Full Front or Full Back

QTY	1	2-6	7-11	12-35	36-71	72+
	\$65	\$55	\$52	\$49	\$47	\$45



EMBROIDERY PERSONALIZATION FONTS

Recommended Placements: Right Chest, Left Chest Or Back Neck

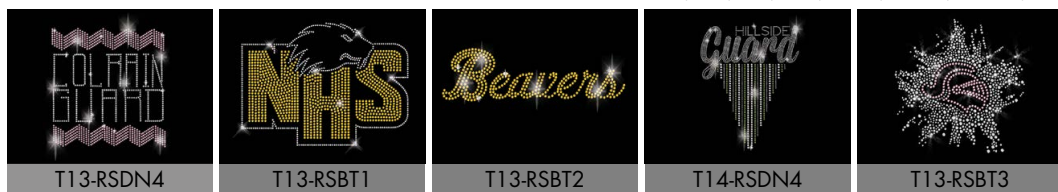
Add your name to any GTM Sportswear item for only \$8!



RHINESTONES

Recommended Placements: Full Front or Full Back

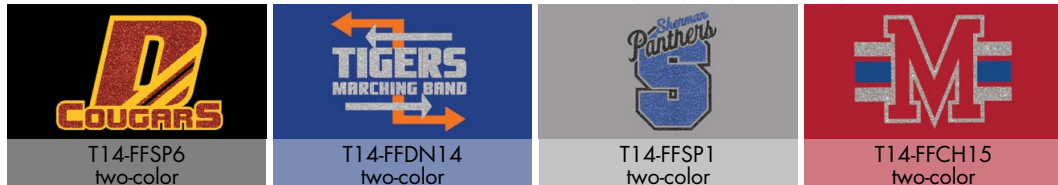
QTY	1	2-6	7-11	12-23	24-35	36-71	72+
	\$36	\$35	\$34	\$33	\$31.50	\$30.50	\$29.50



FASHION FILM

Recommended Placements: Full Front or Full Back

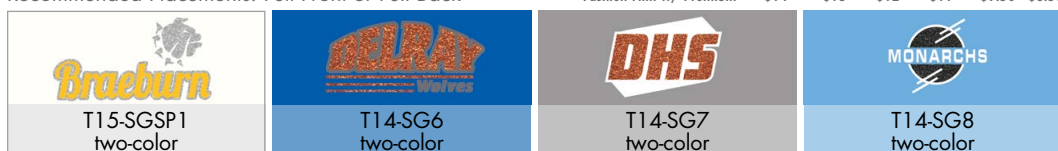
QTY	1	2-6	7-11	12-23	24-35	36+	QTY	1	2-6	7-11	12-23	24-35	36+
One-color Premium	\$12	\$11	\$10	\$9	\$7.50	\$6.50	One-color Fashion Film	\$10	\$9	\$8	\$7	\$5.50	\$4.50
Two-color Premium	\$14	\$13	\$12	\$11	\$9.50	\$8.50	Two-color Fashion Film	\$12	\$11	\$10	\$9	\$7.50	\$6.50



MULTI-PROCESS

Recommended Placements: Full Front or Full Back

QTY	1	2-6	7-11	12-23	24-35	36+
Sport Grip W/ Fashion Film	\$10.50	\$9.50	\$8.50	\$7.50	\$6.50	\$6.50
Sport Grip W/ Premium	\$12.50	\$11.50	\$10.50	\$9.50	\$8.50	\$8.50
Fashion Film W/ Premium	\$14	\$13	\$12	\$11	\$9.50	\$8.50



SPORT GRIP

Recommended Placements: Full Front or Full Back

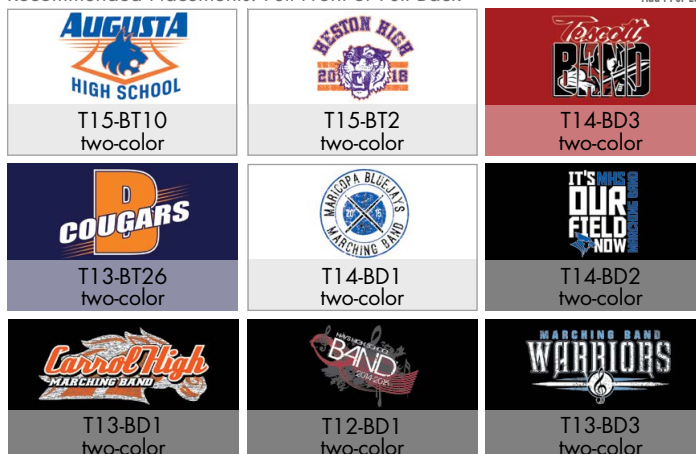
QTY	1	2-6	7-11	12-23	24-35+
One-color	\$7.50	\$6.50	\$5.50	\$4.50	\$3.50
Two-color	\$8.50	\$7.50	\$6.50	\$5.50	\$4.50



SCREEN PRINT

Recommended Placements: Full Front or Full Back

QTY	1-2	3-6	7-11	12-23	24-35	36-71	72+
One-color Design	\$20	\$9	\$7	\$5	\$2.50	\$1.50	\$2.50
Add'l Per Color	\$10	\$6	\$1.50	\$1.50	\$1	\$0.50	\$0.50
Add'l Per Location	\$20	\$9	\$7	\$5	\$2.50	\$1.50	\$1



FREE

LEFT CHEST EMBROIDERY

WITH PURCHASE OF STOCK WARM-UP

Left Chest
Embroidery
Designs

PG 46



Call Your Sales Rep For Details

Expires 8.31.15. Minimum quantity 12. Excludes Fleece, Outlet and UltraFuse Warm-ups. Not valid with other offers.

ATTENTION: BAND DIRECTOR

SOURCE CODE

MLBD0315

CUSTOMER NUMBER



520 McCall Road
Manhattan, KS 66502
1.877.245.4757
gtmband.com



PACKAGE & SAVE

PACKAGE 1 **\$10.99** QTY 144+

PACKAGE 2 **\$27.99** QTY 144+

See page 36 for details